

APPENDIX A: Data Analysis and Graphs

This report analyzed publicly available datasets related to the well-being of residents in the study area (Salt Lake, Davis, Weber, Utah, Tooele, and Summit Counties) as well as statewide data for median income and poverty rates across Utah.

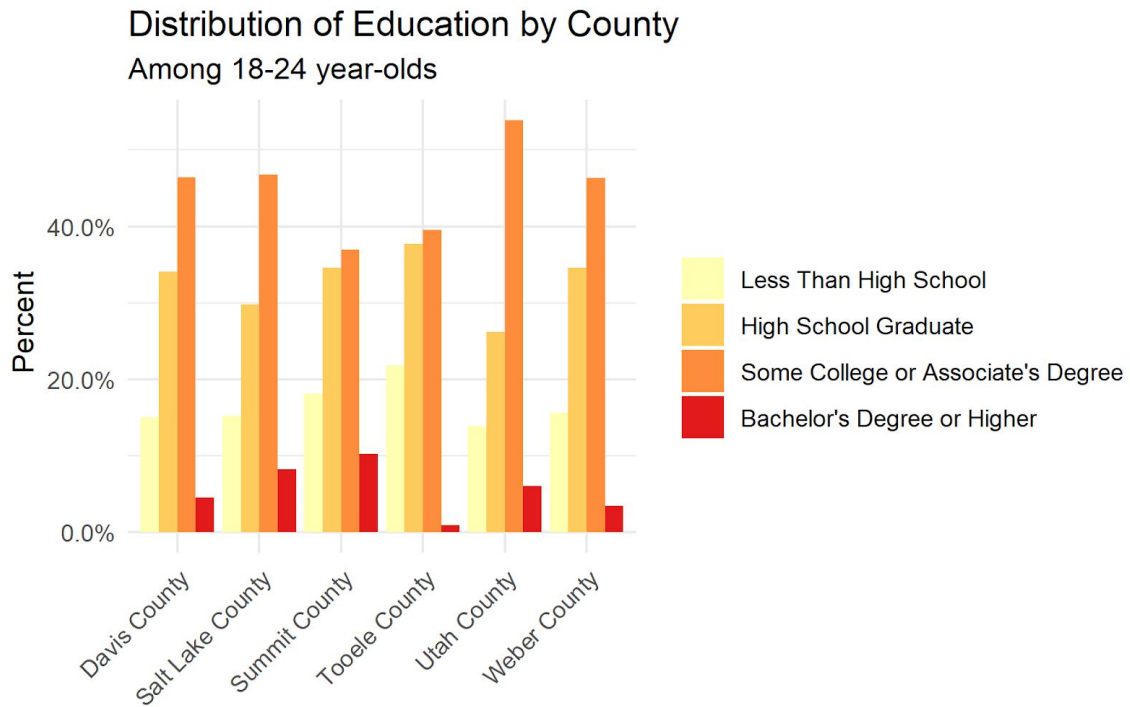
Data Source and Methods

Data sources used here include opendata.gov, the American Community Survey (ACS) Data and the U.S. Census Data. Both ACS 5-year data and annual data were included for the appropriate visualizations. For annual ACS data, the starting year was set to 2012 as per the limitation of the API pull. In addition, ACS annual data is limited to counties with populations greater than 65,000. Consequently, Summit County was automatically excluded from this data set. For the purposes of clarity of plots and graphs, only Davis, Salt Lake, Summit, Tooele, Utah, and Weber Counties were included in this report as these were identified as the primary areas of interest.

- Education
 - Distribution of Education by County (18–24 years old)
 - Distribution of Education by County (25+ years old)
- Unemployment
 - Unemployment Percentage in Civilian Labor Force by County
 - Unemployment Percentage in Civilian Labor Force by County Over Time
- Income
 - Median Household Income Over Time
 - Median Household Income Across Counties
 - Average Gini Index by County
 - Median Household Income by Gini Index (Counties)
 - Top 10 Cities with the Highest Gini Index
 - Top 10 Cities with the Lowest Gini Index
 - Median Household Income by Gini Index (Cities)
- Poverty
 - Average Poverty Rate by County
 - Total Population Below Poverty by County
 - Top 10 Cities with the Highest Populations Below Poverty Level
 - Top 10 Cities with the Highest Poverty Rates
 - Poverty Rates by Sex (top 10 cities with the highest poverty rates)
 - Poverty Rates Over Time
 - Poverty Rate Across Counties
 - Distribution of WIC Clinics in Utah
- Housing and Homelessness
 - New Dwelling Units in 2017
 - Percent Change in New Dwellings (2016 to 2017)
 - Total Number of Units by County and HUD Program
 - Percent Units Occupied by County and HUD Program
 - Months Waiting by County and HUD Program
 - Months from Move-In by County and HUD Program
 - Homeless Headcounts Over Time

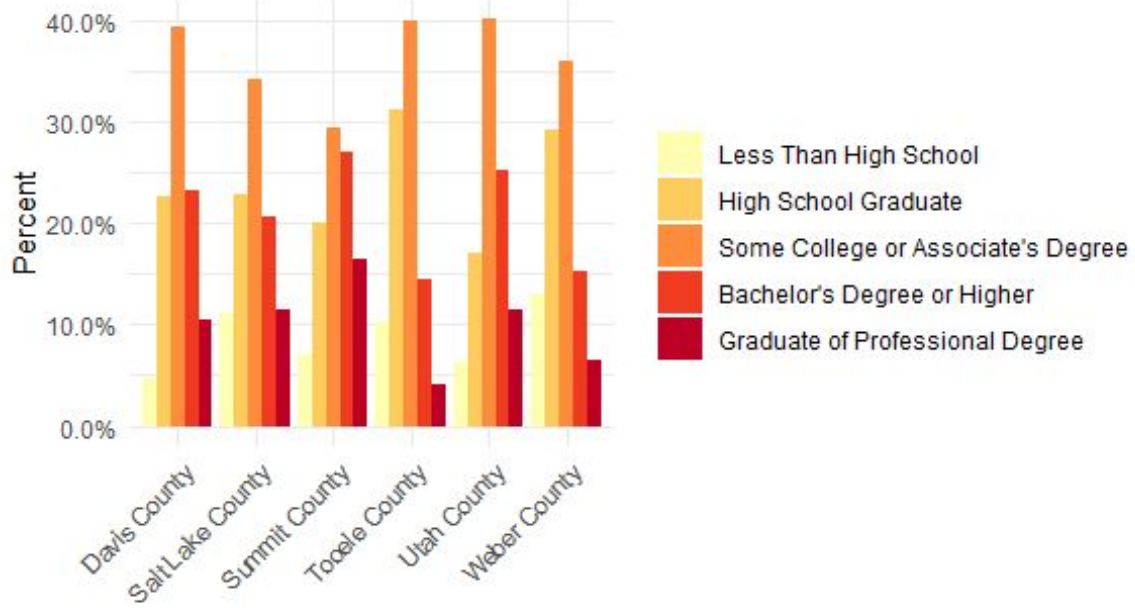
Education

The following couple of plots show the distribution of education among the 18-24-year-olds and those above 25 years of age. In the 18-25-year-old age group, Tooele County has the highest percentage of people with less than high school education and the lowest percentage of those with a bachelor's degree or higher. Tooele County and Weber County have the highest percentage of less than high school graduate among those over 25 years of age.



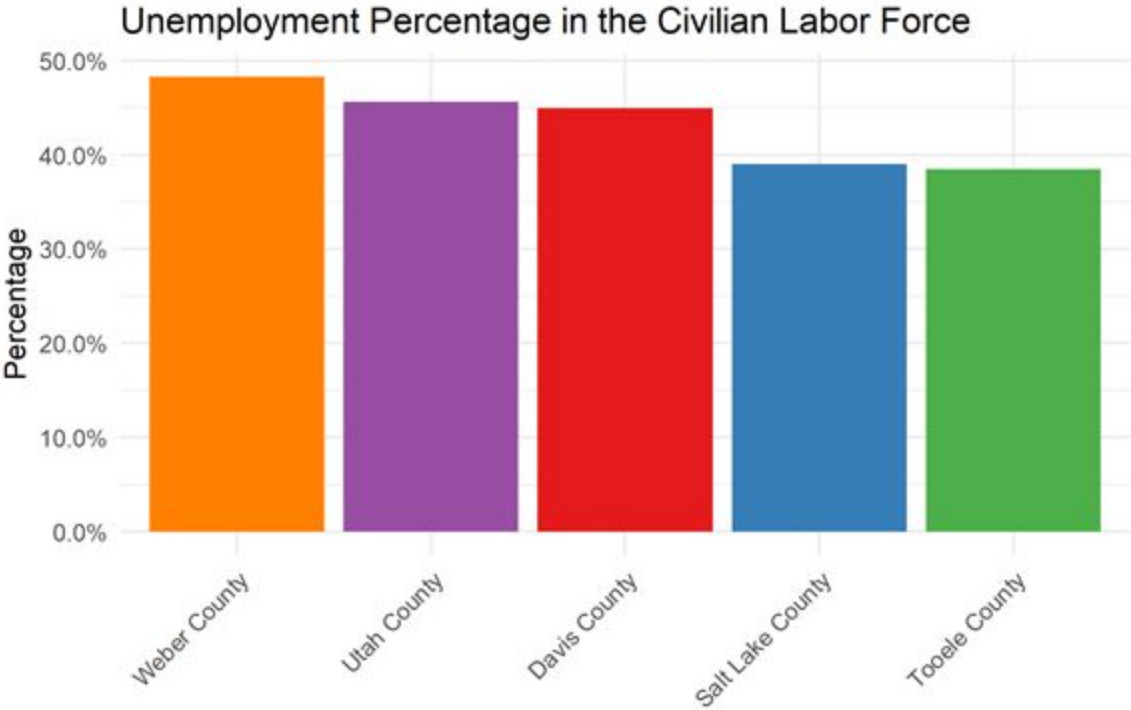
Distribution of Education by County

25 years and over



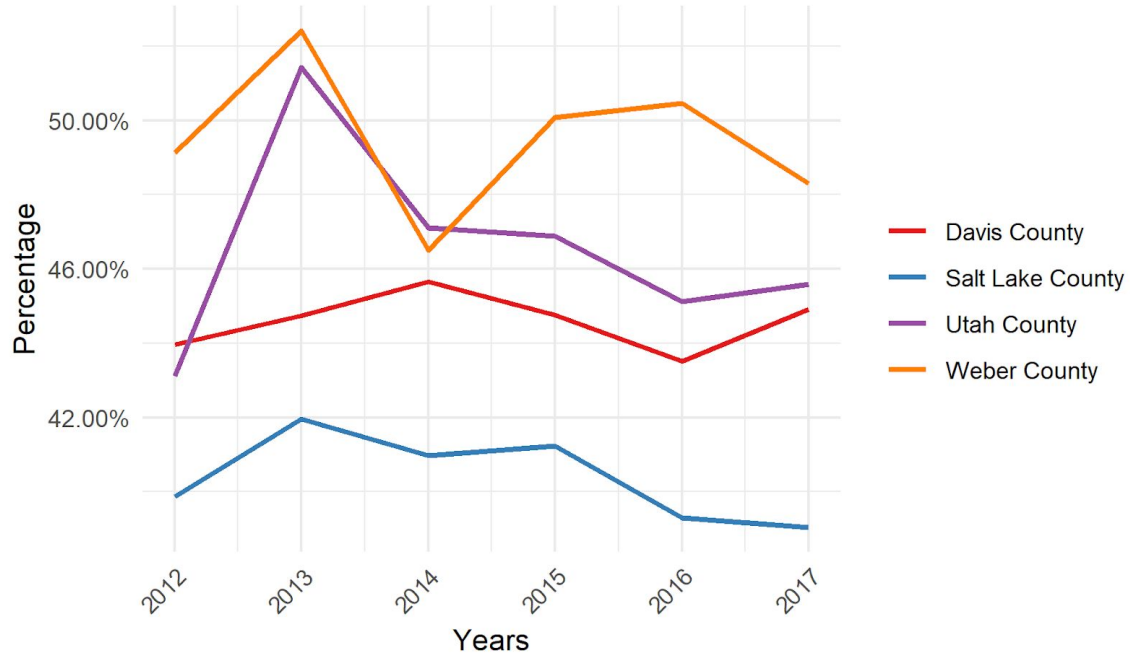
Unemployment

In 2017, Weber County had the highest unemployment percentage among the civilian labor force.



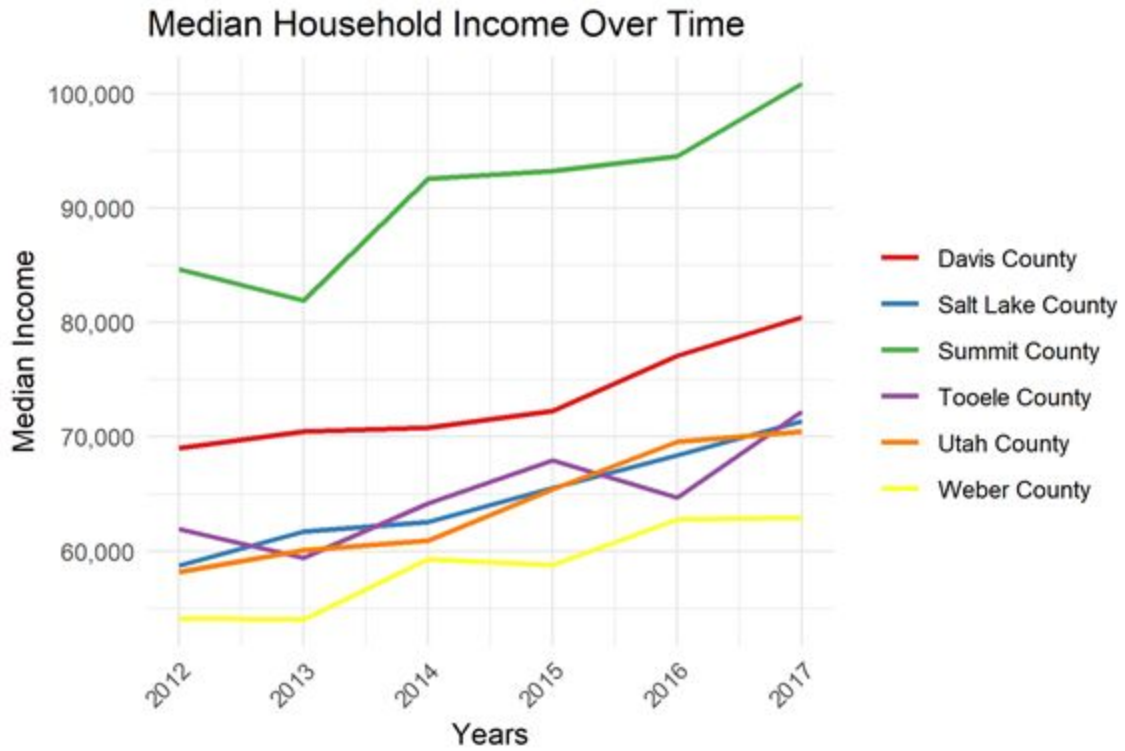
But upon looking at the yearly trends, Weber and Salt Lake Counties have seen a decrease in the unemployment rate, while Davis and Utah Counties have seen an increase in unemployment percentage over the last 6 years. Tooele County was excluded from the plot due to lack of annual data.

Unemployment Percentage in the Civilian Labor Force
By County over Time



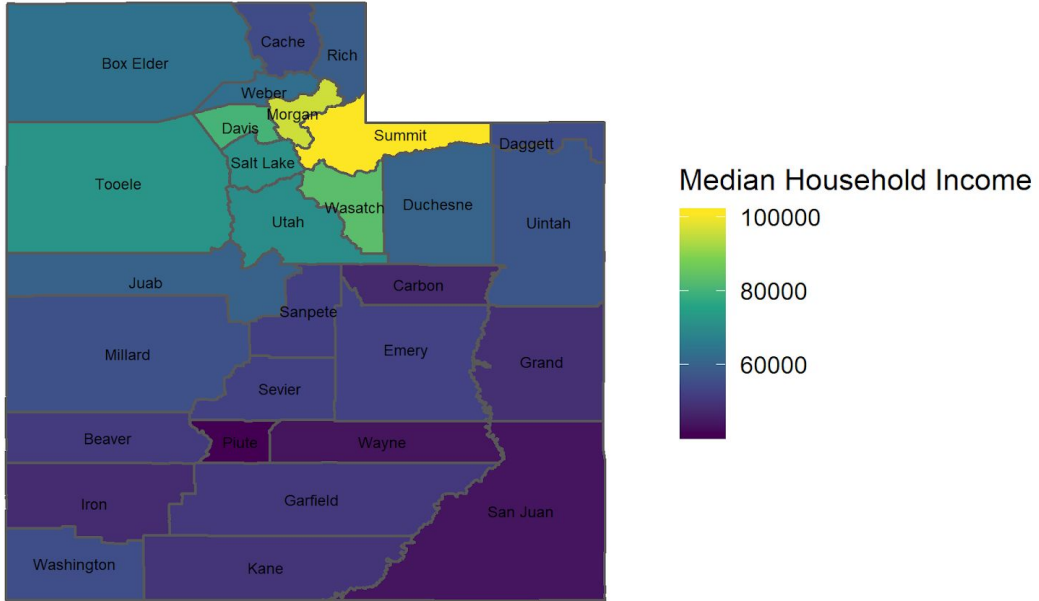
Income

The median household income has increased over time in all the counties of interest with Summit County having the highest median income and Weber County with the lowest median income.

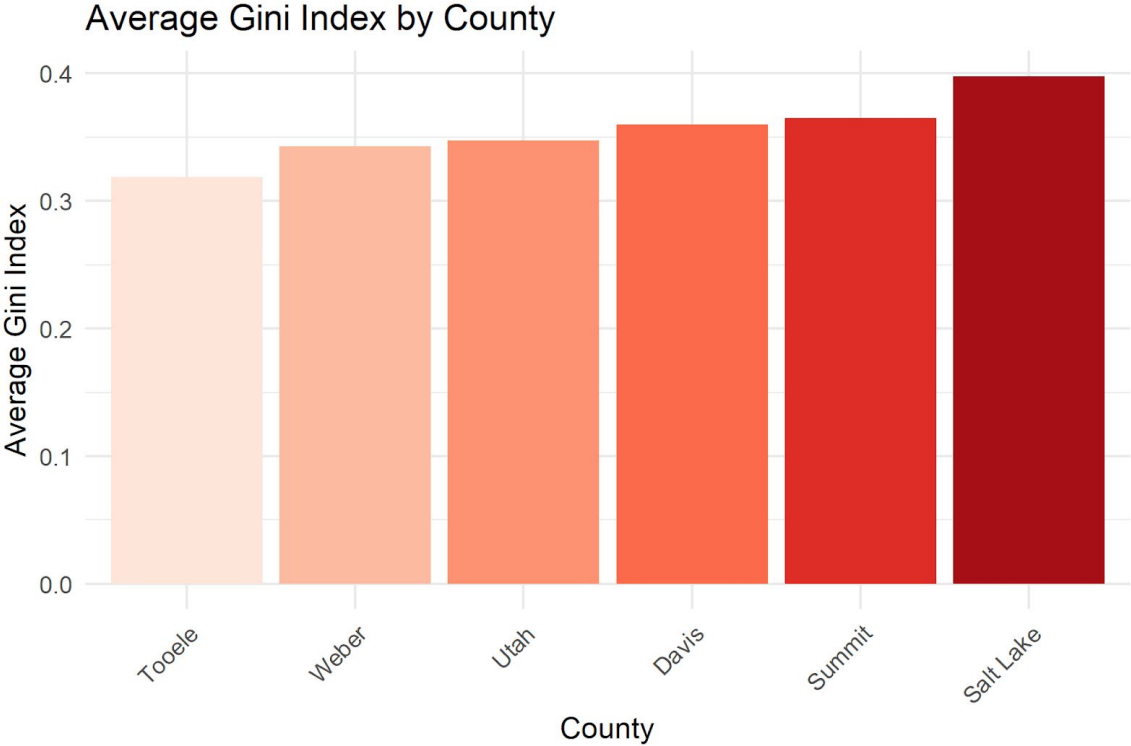


This map shows that Summit County has the highest median household income in Utah with the lowest being Piute County.

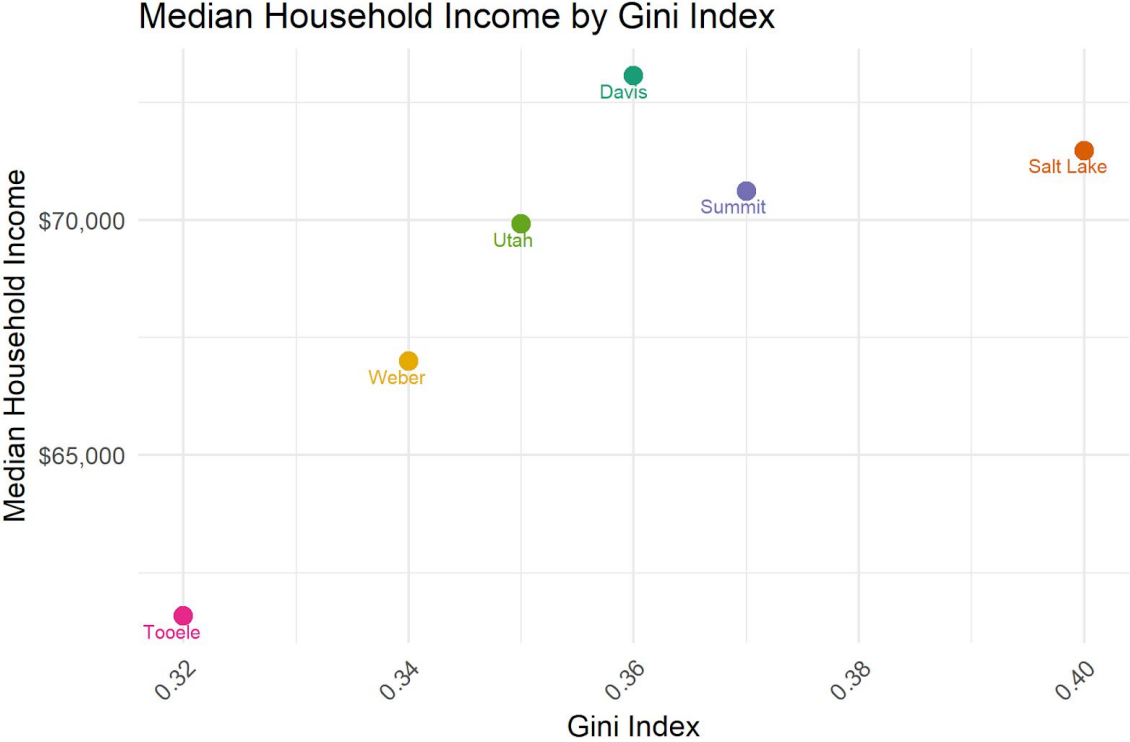
Median Income Across Counties



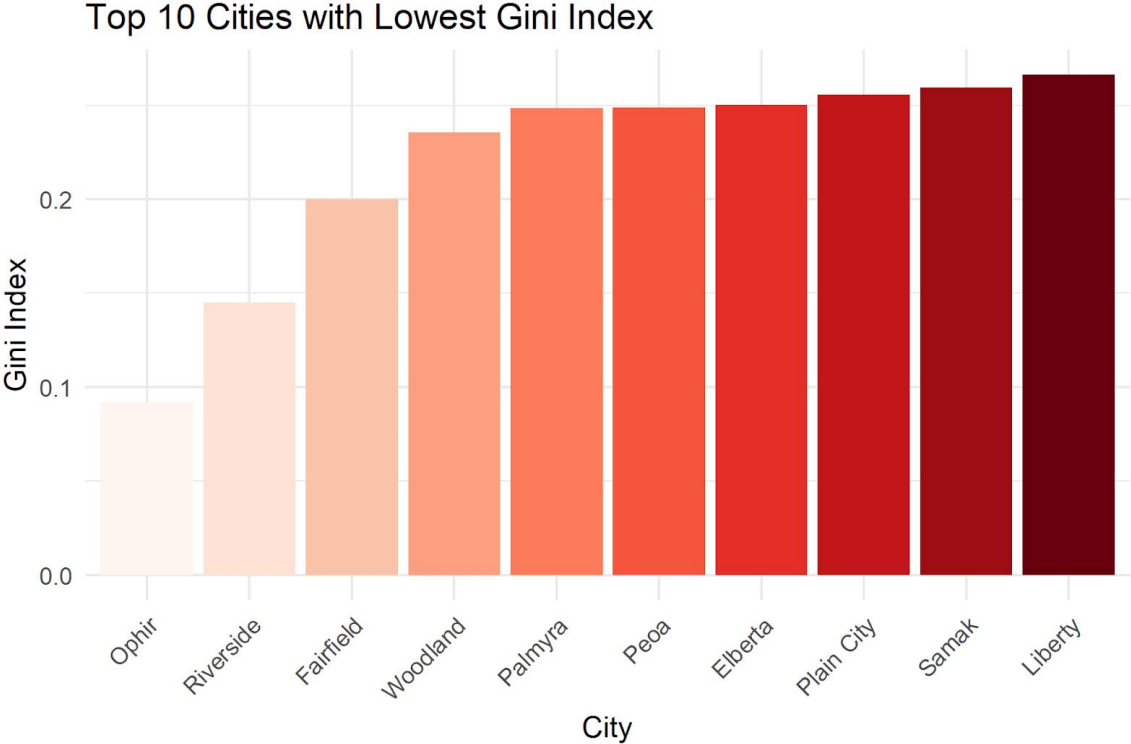
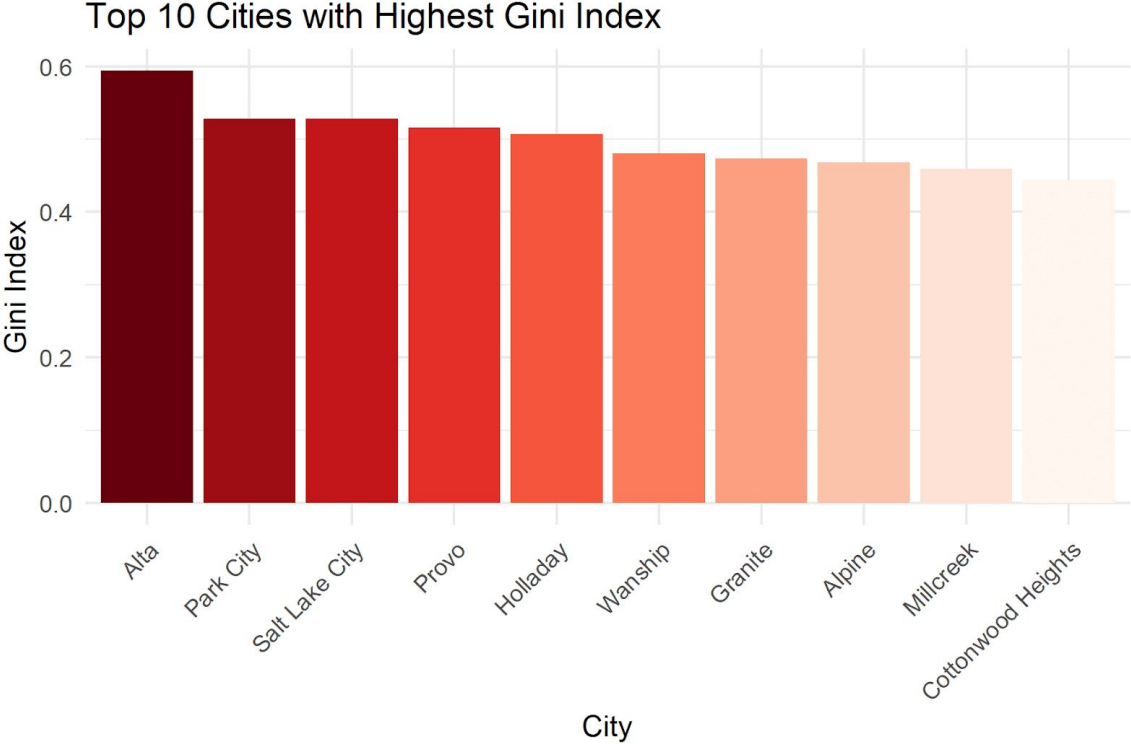
This plot shows that Tooele has the lowest Gini Index.



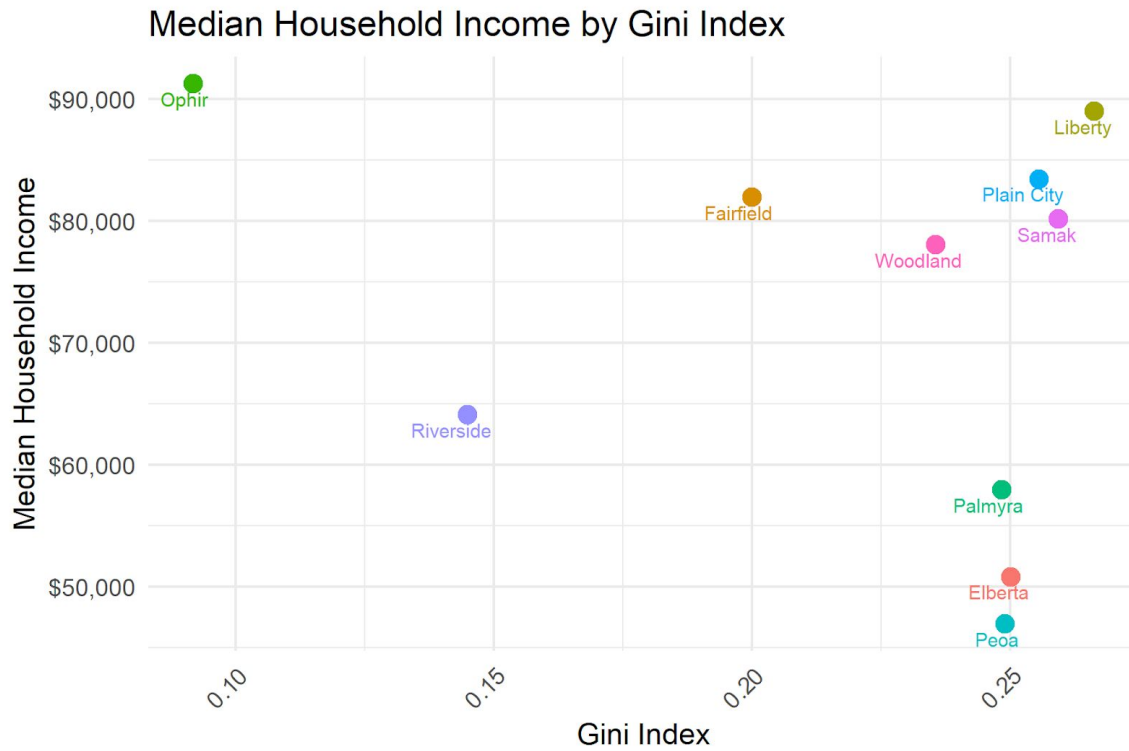
Tooele also has the lowest Gini Index to median Household income ratio, which is indicative of a fairly equal distribution of low income.



When looking at cities and their Gini Index, Alta has the highest Gini Index and Ophir (in Utah county) has the lowest Gini Index.



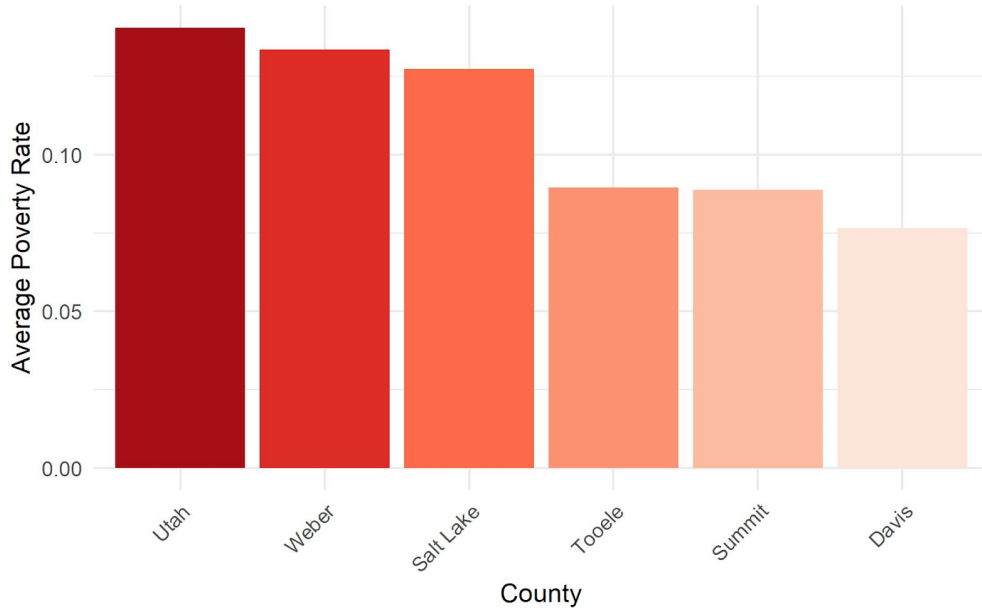
Ophir also has a high median income and a low Gini Index indicating an equal distribution of high income in the community, while cities Riverside has a low Gini Index and a low median income, indicative of a poorer city.



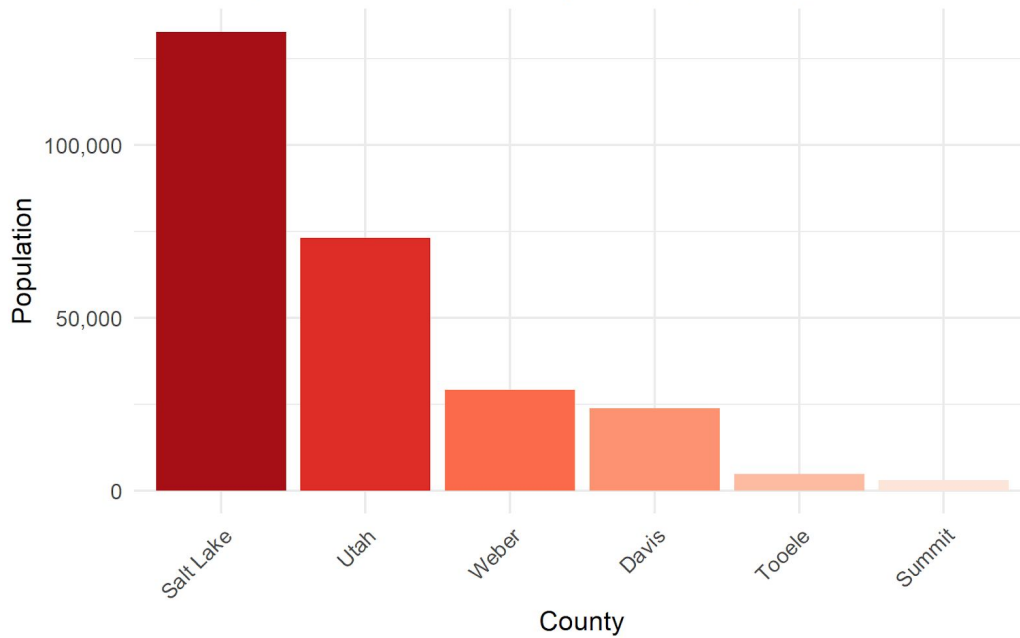
Poverty

While Salt Lake County does not have the highest poverty rate among the counties of interest, it does have the highest population below poverty level which poses a significant burden on the county.

Average Poverty Rate by County

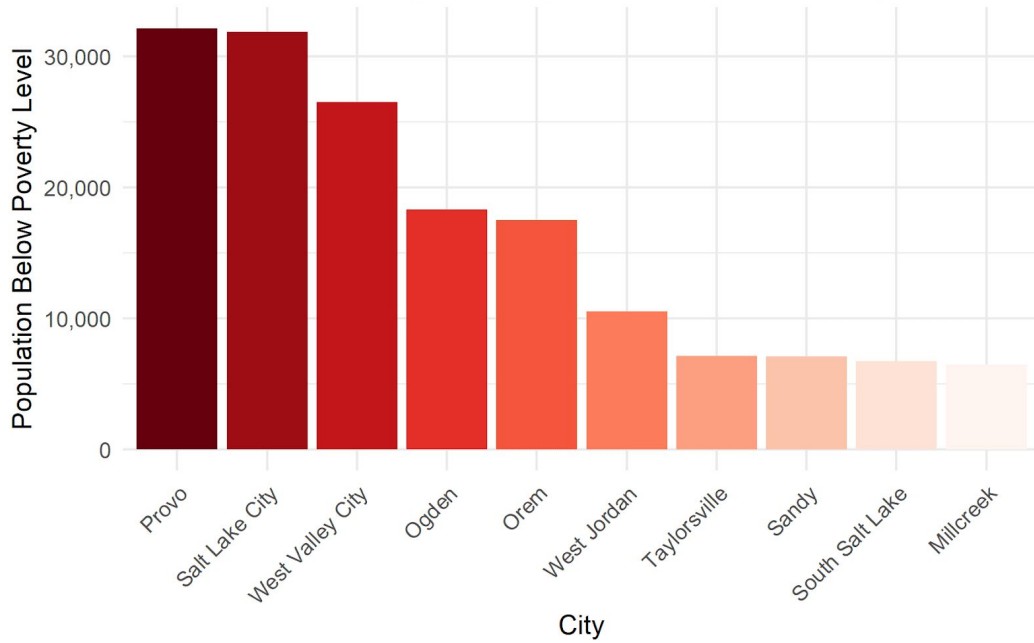


Total Population Below Poverty Level by County

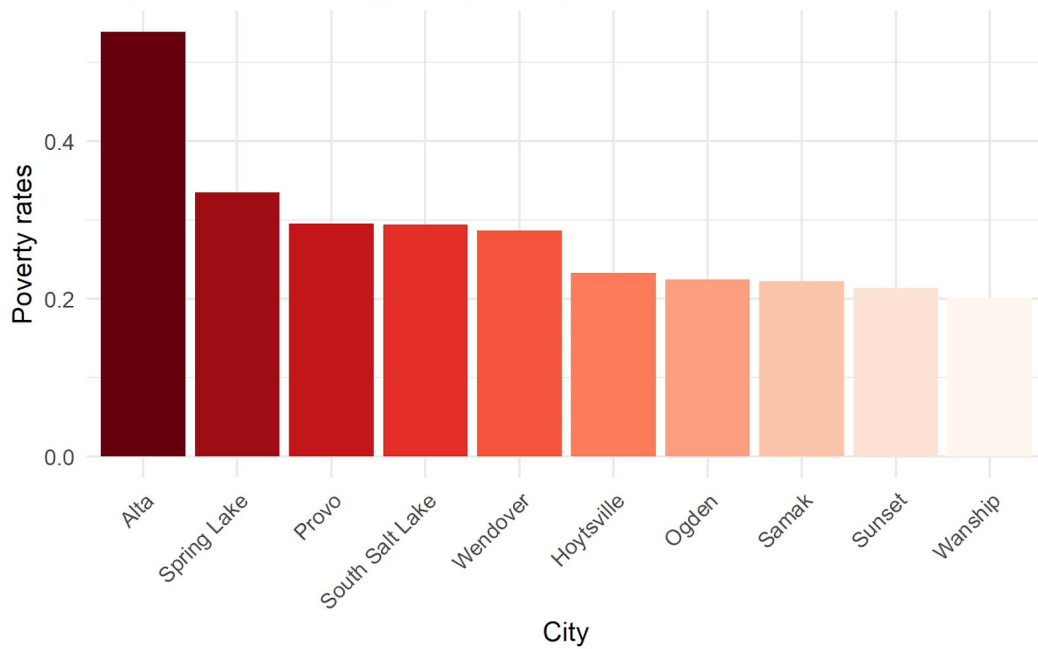


7 out of 10 cities with the highest populations below the poverty level belong to Salt Lake County.

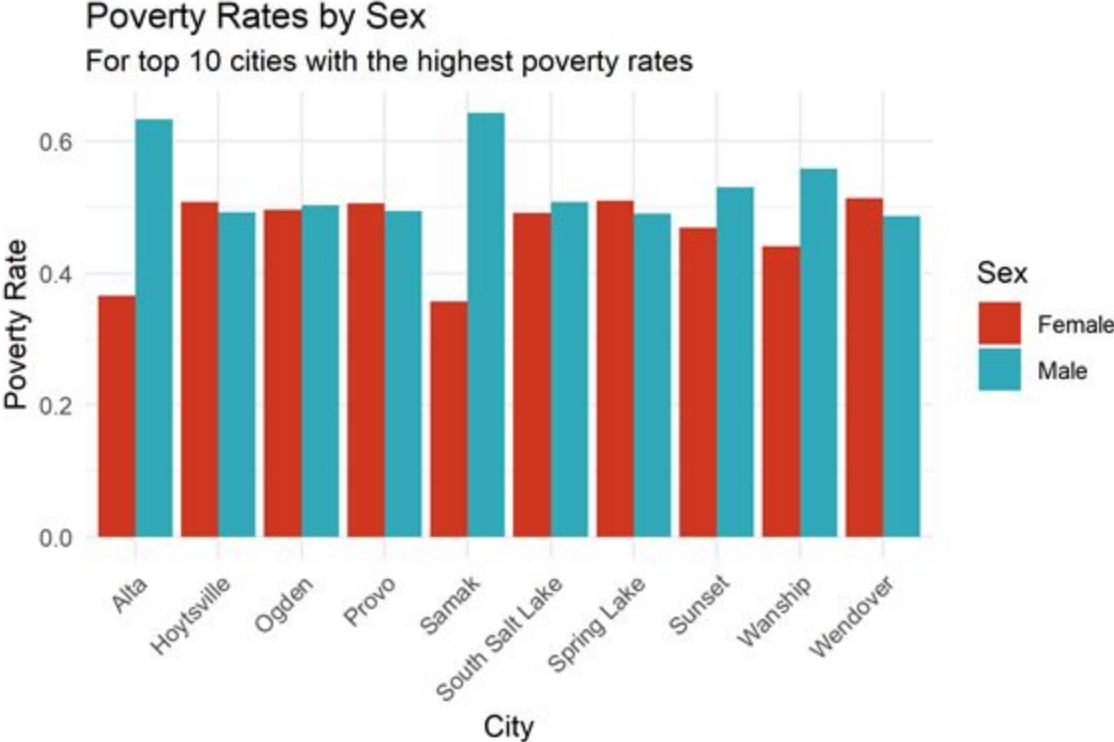
Top 10 Cities with Highest Populations Below Poverty Level



Top 10 Cities with highest poverty rates

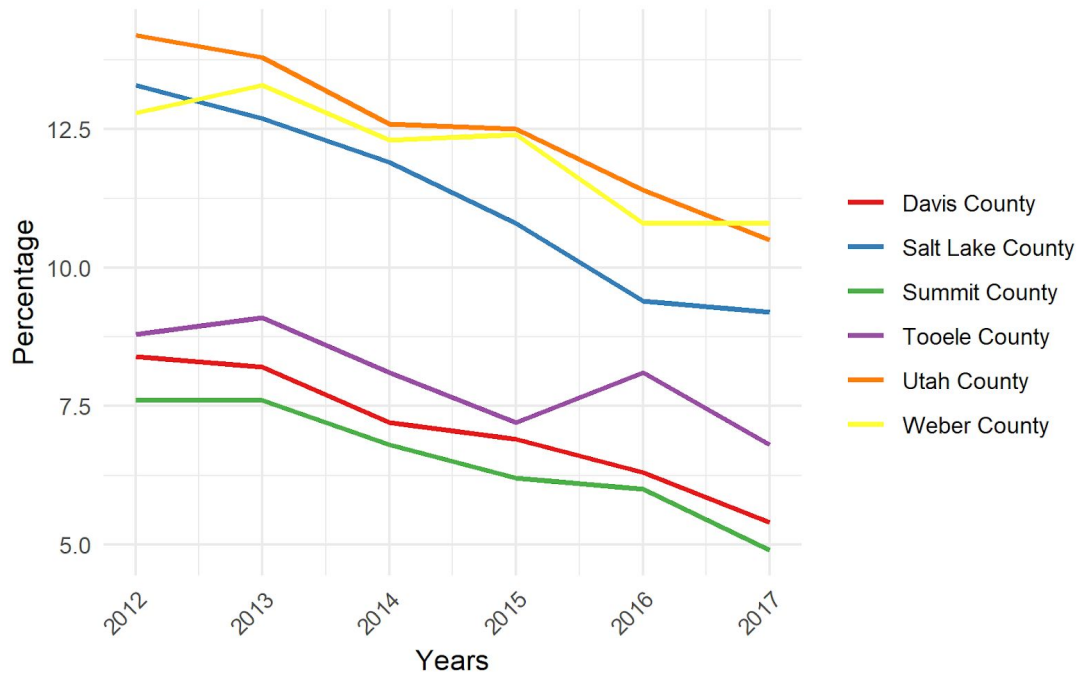


The rates of poverty between men and women are very comparable for the top 10 cities with the highest poverty rates, with the exception of Alta and Samak.



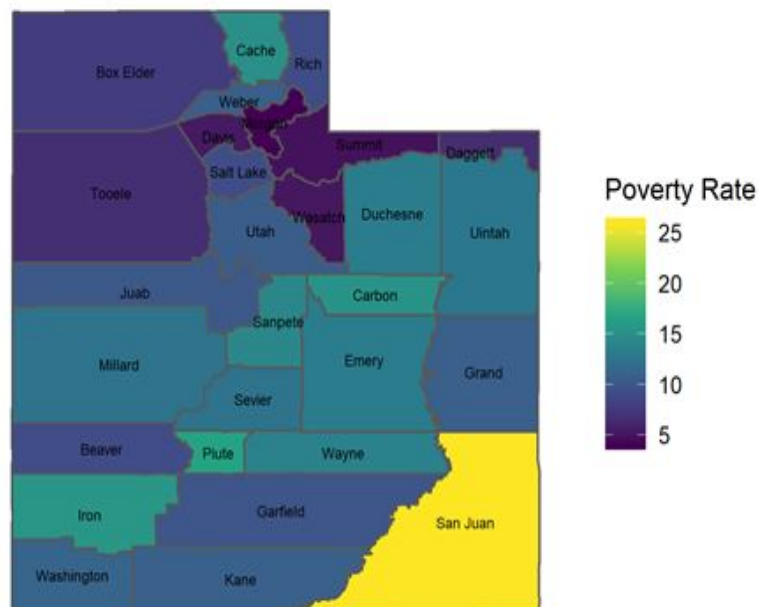
The poverty rates have decreased over time for all counties of interest which is hopeful.

Poverty Rates Over Time

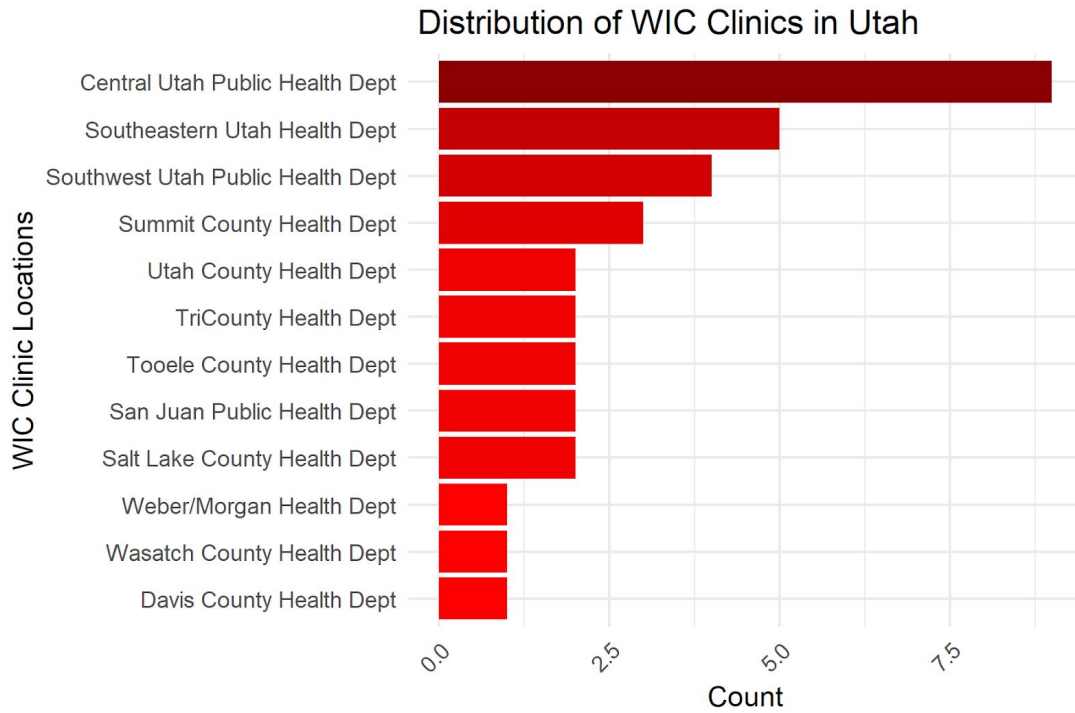


The highest poverty rate in Utah is in San Juan county.

Poverty Rate Across Counties

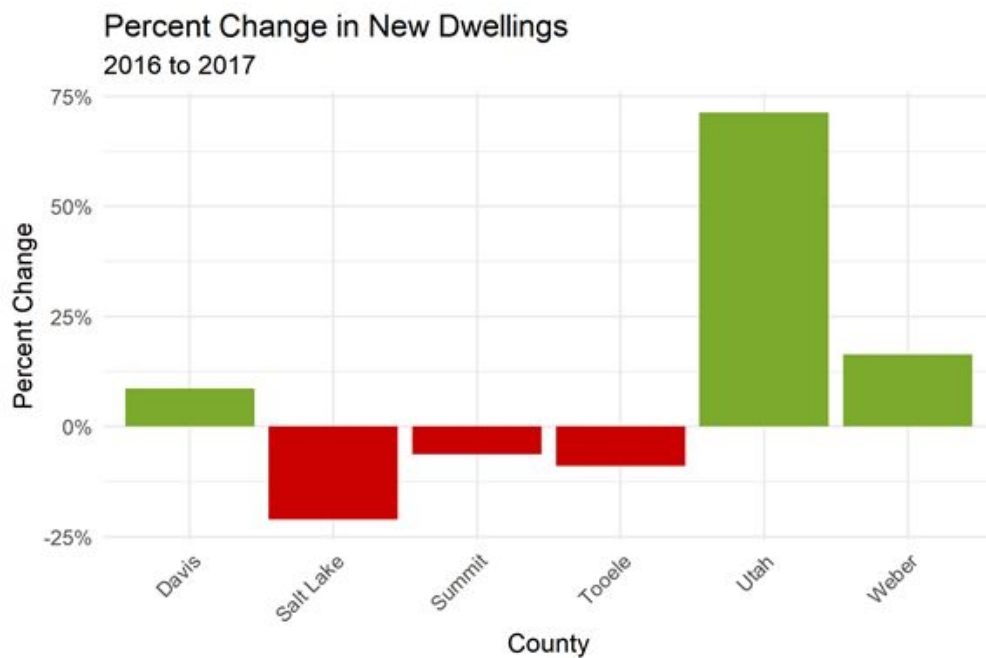
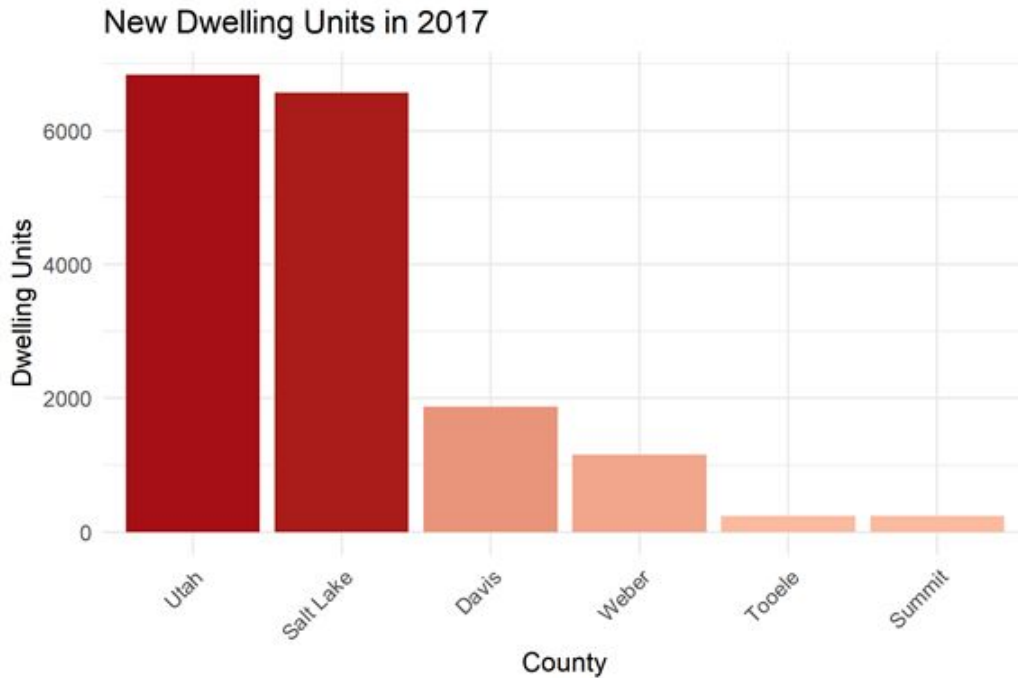


Central Utah Public Health has the most WIC Clinics in Utah, and Davis, Wasatch and Weber/Morgan Counties with the least number of WIC Clinics



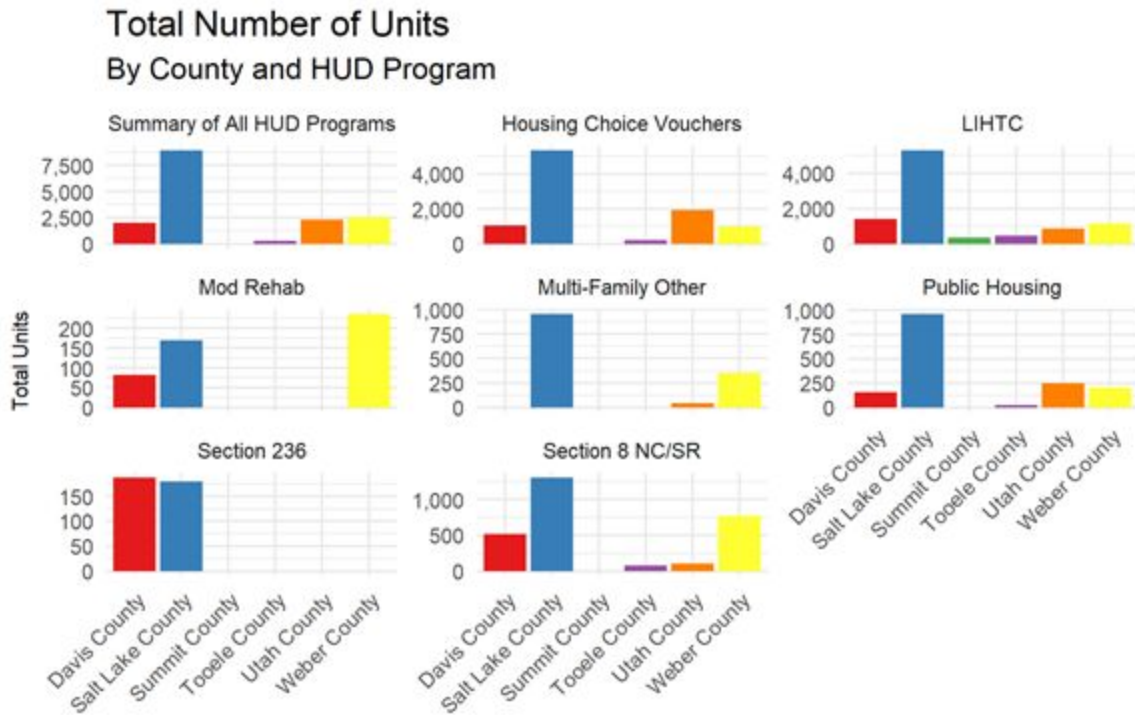
Housing and Homelessness

In the year 2017, Utah County had the highest number of new dwelling units, followed by Salt Lake County. The new units in these counties were upwards of 6,000 and were significantly higher than the other counties of interest. But the percent change in new dwelling units (2016 to 2017 comparison) shows that Utah county had a significant increase in dwelling units, while Salt Lake County had a decrease in dwelling units.

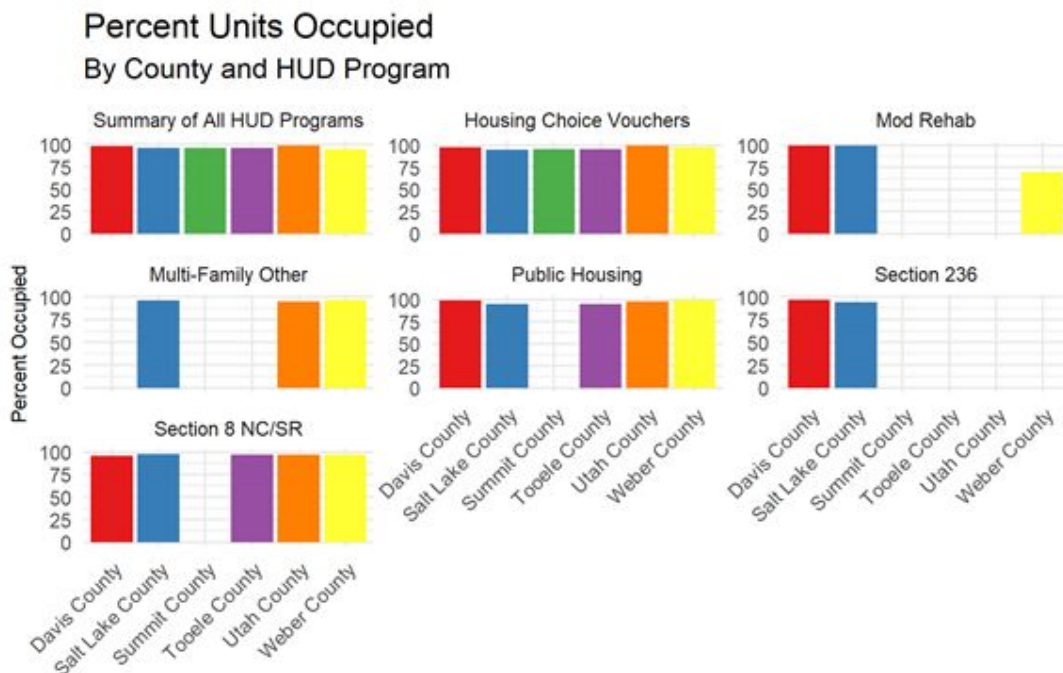


The following four plots describe additional information regarding the units under the Department of Housing and Urban Development (HUD). Missing bars in these plots do not signify 0 and denote data that is either missing or not applicable for the particular program. (Exception: Total number of units (summary of all HUD programs) for Summit County is equal to 3 units, the bar for which appears to be missing because of the scale of SL County's units. Multi-family Other Units for Davis County is equal to 0.)

Salt Lake County has the most number of units under HUD programs. Tooele County has the least.



This plot shows the burden on HUD. Most programs show close to 100% occupancy.



Most counties (except Summit) have a pretty long wait time, especially when it comes to Housing Choice

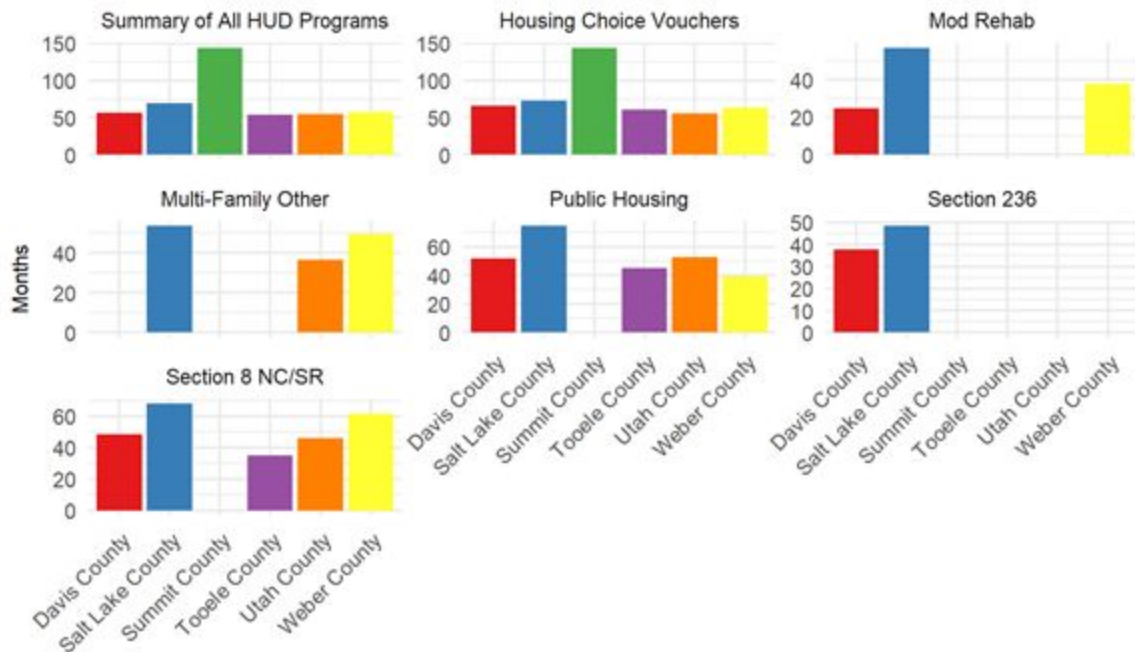
Vouchers.

Months Waiting By County and Program



Summit County has the highest months from move in time, close to 15 months for housing choice vouchers.

Months from Move In by County and Program



The plot below shows that Salt Lake City has the highest number of homeless headcounts by a very big margin.

